

Question Booklet
Series:**A****MD/MS/PG Diploma Entrance Test - 2015
QUESTION BOOKLET
Paper - I (Pre-Clinical and Para-Clinical)****INSTRUCTIONS**Question Booklet
Number:**110425**

Maximum Time Allowed: 2 Hours

No. of Questions: 150
Maximum Marks: 150

Roll Number:

Answer Sheet Number:

Please read the following instructions carefully:

1) **Check the Question Booklet thoroughly:** In case of any defect - Misprint, Missing question(s), Missing page, Blank page, Damaged or Defaced page, or duplication of question(s) / Page(s), get the Booklet changed with the Booklet of the same series from the Room Invigilator. No complaint shall be entertained after the Entrance Test is over.

2) Write your Roll Number and the OMR Answer Sheet Number on the Question Booklet.

3) Mark carefully your Roll Number, Question Booklet Number, Paper Code, Question Booklet Series and Course on the OMR Answer Sheet and sign at the appropriate place. Incomplete particulars given will result in the non-evaluation of your Answer Sheet.

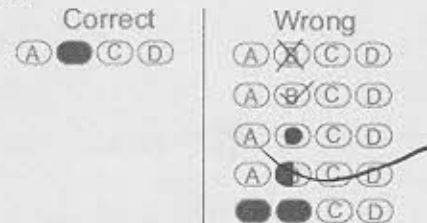
4) Strictly follow the instructions given by the Centre Supervisor / Room Invigilator and those given on the Question Booklet.

5) Candidates are not allowed to carry any papers, notes, books, calculators, cellular phones, scanning devices, pagers etc. to the Examination Hall. Any candidate found using, or in possession of, such unauthorized material or indulging in copying or impersonation or adopting unfair means / reporting late / without Admit Card will be debarred from the Entrance Test.

6) Please mark the right responses on the OMR Sheet with ONLY a Blue/Black ball point pen. Use of eraser, whitener (fluid) and cutting on the OMR Answer Sheet is NOT allowed.

7) The test is of objective type, containing multiple choice questions (MCQs). Each objective question is followed by four responses. You are required to choose the correct/best response and mark your response on the OMR Answer Sheet and NOT on the Question Booklet.

8) For marking response to a question, completely darken the CIRCLE so that the alphabet inside the CIRCLE is not visible. Darken only ONE circle for each question. If you darken more than one circle, it will be treated as a wrong answer. The CORRECT and the WRONG methods of darkening the CIRCLE on the OMR Answer Sheet are shown below.



9) Please be careful while marking the response to questions. The response once marked cannot be changed and if done shall be treated as a wrong answer.

10) In view of the limited time, do NOT waste your time on a question which you find difficult. Attempt easier questions first and come back to the difficult questions later during the test.

11) DO NOT make any stray marks anywhere on the OMR Answer Sheet. DO NOT fold or wrinkle the OMR Answer Sheet.

12) Rough work MUST NOT be done on the OMR Answer Sheet. Use rough page of your Question Booklet for this purpose.

13) Candidates are provided carbonless OMR Answer Sheet, having original copy and candidate's copy. After completing the examination, candidates are directed to fold at perforation on the top of the sheet, tear it to separate original copy and candidate's copy and then hand over the original copy of OMR Answer Sheet to the Room Invigilator and retain candidate's copy.

DO NOT OPEN THE SEAL OF THIS BOOKLET UNTIL TOLD TO DO SO

1. 'Incidentalomas' is the other name for
 - (A) Adrenocortical adenoma
 - (B) Neoplasm of adrenal medulla
 - (C) Ganglioneuroma
 - (D) Neuroblastoma
2. Which of the following drugs is used in treatment of sickle cell anemia?
 - (A) Hydroxyurea
 - (B) Cisplatin
 - (C) Paclitaxel
 - (D) Carboplatin
3. Low intake of which of the following micronutrients has been found to be associated with lung cancers?
 - (A) Vit D
 - (B) Vit C
 - (C) Vit B
 - (D) Vit A
4. Gastrointestinal stromal tumor has a diagnostic genetic mutation of
 - (A) Loss of function of c-KIT
 - (B) Gain of function of c-KIT
 - (C) Translocation of c-KIT
 - (D) Triple replication of c-KIT
5. Whole blood transfusion is indicated in which of the following conditions?
 - (A) Exchange transfusion
 - (B) Severe Iron deficiency anemia
 - (C) Burn patients
 - (D) Hemophilia
6. Kaposi sarcoma is caused by:
 - (A) Human Herpes virus 8
 - (B) Parvovirus
 - (C) Human Herpes virus 3
 - (D) Human Herpes virus 4
7. Mechanism by which maximum secretion of gastric acid occurs is:
 - (A) $\text{Na}^+\text{-K}^+$ ATPase pump
 - (B) H_2 receptor stimulation
 - (C) Cholinergic receptor stimulation
 - (D) Neurogenic
8. Digitalis should be avoided in following conditions EXCEPT
 - (A) Rheumatic carditis
 - (B) Thyrotoxicosis
 - (C) WPW syndrome
 - (D) Hyperkalemia
9. All enzymes of the Krebs cycle are located in the mitochondrial matrix EXCEPT:
 - (A) Alpha ketoglutarate dehydrogenase
 - (B) Isocitrate dehydrogenase
 - (C) Succinate dehydrogenase
 - (D) Succinate thiokinase
10. A person acclimatized to cold shows all of the following changes EXCEPT:
 - (A) Increased TSH secretion
 - (B) Increased vascular insulation
 - (C) Initiation of shivering at lower body temperature
 - (D) Anorexia
11. CAMP test is useful in identification of:
 - (A) Group A Streptococcus
 - (B) Group B Streptococcus
 - (C) Group D Streptococcus
 - (D) None of the above
12. Hot cold phenomenon is due to which toxin of Staphylococcus?
 - (A) Alpha lysin
 - (B) Beta lysin
 - (C) Gamma lysin
 - (D) Theta lysin

13. Splenic vein unites with the superior mesenteric vein to form Portal vein at:
(A) Posterior to neck of pancreas
(B) Anterior to neck of pancreas
(C) Posterior to body of pancreas
(D) Anterior to body of pancreas
14. Which of the following drugs DOES NOT act via Na⁺ channel modulation?
(A) Vigabatrin
(B) Phenytoin
(C) Valproate
(D) Lamotrigine
15. A case of Meningococcal Meningitis reports to a PHC medical officer and effective antibiotic treatment is completed. What should be the period of isolation in this patient?
(A) 6 hours
(B) 12 hours
(C) 24 hours
(D) 48 hours
16. Janus 2 kinase mutations is seen in all, EXCEPT:
(A) Polycythemia Vera
(B) Primary myelofibrosis
(C) Essential Thrombocythemia
(D) Myeloid neoplasms with eosinophilia
17. Which of the following is NOT true about Western Blot Test for Lab diagnosis of Human Immunodeficiency Virus (HIV)?
(A) It is a highly sensitive test for HIV
(B) It is done to weed out any false positive results
(C) It detects the specific antibodies to viral core protein
(D) This is a difficult test to perform and interpret than ELISA but is highly specific
18. Effects of total body ionizing radiations (2-10 Sv) is:
(A) Ataxia
(B) Diarrhea
(C) Leucopenia
(D) Moderate granulocytopenia
19. The term 'vaccine' was coined by:
(A) Edward Jenner
(B) Ehrlich
(C) Robert Koch
(D) Louis Pasteur
20. Myasthenia gravis is characterized by:
(A) Formation of circulating antibodies to the nicotinic acetylcholine muscle receptors
(B) Formation of antibodies against pre-synaptic Ca²⁺ channels at neuromuscular junction
(C) Weakness of proximal muscles of lower extremity
(D) Repetitive stimulation of motor nerve leads to improvement of muscle strength
21. Unnatural sexual offences include all EXCEPT:
(A) Tribadism
(B) Lesbianism
(C) Voyeurism
(D) Bestiality
22. Which of the following is NOT a feature of El Tor Vibrios?
(A) Hemolysis sheep erythrocytes
(B) Voges-Proskauer reaction positive
(C) Susceptible to Mukherjee Phage IV
(D) Agglutinate chick erythrocytes
23. Which of the following synthetic insecticide compounds are NOT recommended for larvicidal operations?
(A) Abate
(B) Chlorpyrifos
(C) Fenthion
(D) HCH

24. The in-situ effective life of which of the following intrauterine contraceptive devices is about 10 years?
- (A) LNG-20 (Mirena)
 - (B) Nova T
 - (C) CuT 200 B
 - (D) MI Cu 375
25. Choose the CORRECT statement about the pudendal nerve:
- (A) Derived from dorsal rami from S2-S4
 - (B) Leaves the pelvis through lesser sciatic foramen
 - (C) Enters the perineum through the greater sciatic foramen
 - (D) It is chief sensory nerve of external genitalia
26. Somatic efferent column in brainstem is represented by one of the following cranial nerves:
- (A) Oculomotor
 - (B) Trigeminal
 - (C) Facial
 - (D) Glossopharyngeal
27. In Huntington's disease, the genetic abnormality is dinucleotide repeat expansion of
- (A) ATG
 - (B) TAG
 - (C) CAG
 - (D) CGA
28. The ability of stem cells to differentiate outside of their own tissue boundaries is known as:
- (A) Plasticity
 - (B) Elasticity
 - (C) Durability
 - (D) Vulnerability
29. Vector for *Trypanosoma cruzi* is:
- (A) Reduviid bug
 - (B) Tsetse fly
 - (C) Sandfly
 - (D) Hard tick
30. As per NCEP ATP III recommendation, therapeutic target of LDL-cholesterol of a Diabetic patient is less than:
- (A) 160 mg/dL
 - (B) 130 mg/dL
 - (C) 100 mg/dL
 - (D) 70 mg/dL
31. All cardiovascular reflexes are sensitive to changes in the:
- (A) Systolic blood pressure
 - (B) Diastolic blood pressure
 - (C) Pulse pressure
 - (D) Mean blood pressure
32. Equatorial Comfort Index measures:
- (A) Heat Stress
 - (B) Cold Stress
 - (C) Pressure Stress
 - (D) Noise Stress
33. Which immunoglobulin class is heat labile?
- (A) IgG
 - (B) IgE
 - (C) IgA
 - (D) IgM
34. When a cell needs only NADPH and not pentose, it uses following phases of pentose phosphate pathway:
- (A) Irreversible phase
 - (B) Reversible phase
 - (C) Both irreversible and reversible phases
 - (D) Any of the irreversible and reversible phases
35. Presence of HBeAg in patients with hepatitis indicates:
- (A) Simple carrier
 - (B) Late convalescence
 - (C) Chronic carrier
 - (D) High infectivity

36. Kishori Shakti Yojana, a scheme for adolescent girls is:
- (A) Pilot Scheme being implemented in few selected blocks under ICDS
 - (B) The scheme targets adolescent children in the age group 10-19 years
 - (C) This scheme ensures free provision of food grains to the beneficiaries
 - (D) This scheme addresses only the nutritional and adolescent health needs of the beneficiaries
37. As per the available hospital data from India, approximately 50% cancers are contributed by:
- (A) Uterine Cervix in women and Lung in both sexes
 - (B) Breast in women and Lung in both sexes
 - (C) Uterine Cervix in women and Oropharynx in both sexes
 - (D) Breast in women and Oropharynx in both sexes
38. Which of the following is NOT an adrenergic neuron blocking drug?
- (A) Reserpine
 - (B) Guanethedine
 - (C) Bretylium
 - (D) Minoxidil
39. All are true about Bupivacaine EXCEPT:
- (A) Less cardiotoxic than Lignocaine
 - (B) Dose increases with adrenaline
 - (C) Long acting
 - (D) Used in Post-operative pain relief.
40. Negri bodies are commonly seen in:
- (A) Hippocampus
 - (B) Hypothalamus
 - (C) Mamillary bodies
 - (D) Cerebrum
41. All of the following prevent clotting of blood in circulation EXCEPT:
- (A) Smooth endothelial lining
 - (B) Sluggish blood flow
 - (C) Presence of heparin and protein C in blood
 - (D) Presence of protein anions over the endothelial lining
42. During Renal Transplantation there is a risk of transmission of which of the following disease agents?
- (A) Plasmodium (Malaria)
 - (B) Hepatitis B virus
 - (C) Cytomegalovirus
 - (D) Trypanosomes
43. The criteria for False virgin is :
- (A) Torn hymen
 - (B) Intact hymen
 - (C) Increased vaginal rugosity
 - (D) Opposed labia minora
44. The causative agent of Lyme's disease is:
- (A) Borrelia burgdorferi
 - (B) Borrelia recurrentis
 - (C) Leptospira icterohaemorrhagiae
 - (D) Clostridium difficile
45. The defect in sickle cell anemia is:
- (A) Abnormal synthesis of Heme
 - (B) Nonsense mutation in beta chain of HbA
 - (C) Incorporation of Valine instead of Glutamic acid in beta chain of HbA
 - (D) Incorporation of Glutamic acid instead of Valine in beta chain of HbA
46. Cephalosporin that DOES NOT require dose reduction in patients with renal failure:
- (A) Cefuroxime
 - (B) Cefoperazone
 - (C) Ceftazidime
 - (D) Cefotaxime

47. The positive sign of pregnancy is:
(A) Increased levels of beta HCG in the blood
(B) Intermittent Uterine contractions
(C) Visualisation of white ring on USG abdomen
(D) Appreciation of fetal movement by the mother
48. Which of the following is a pain receptor?
(A) Ruffini's corpuscles
(B) Free nerve endings
(C) Meissner's corpuscle
(D) Pacinian corpuscles
49. A 28 year old antenatal women with 16 weeks of gestation presents to a Primary Health Care with burning micturition, genital itching and atypical discharge from vagina. As per protocol after local examination the treatment option is:
(A) Treat with oral secnidazole/tinidazole with metronidazole and clotrimazole pessary along with partner management
(B) Treat with oral secnidazole/tinidazole and fluconazole with clotrimazole pessary along with partner management
(C) Take a swab for Culture Sensitivity and treat her and her partner on next visit when you receive lab reports of swab
(D) Treat with oral secnidazole and fluconazole with clotrimazole pessary along with partner management
50. Angioinvasion is seen in:
(A) Aspergillosis
(B) Cryptococcosis
(C) Mucormycosis
(D) Candidiasis
51. All are true regarding counter-current system in the kidney EXCEPT:
(A) Establishes hyperosmotic medullary interstitial gradient
(B) Capable of increasing the urine osmolality by more than four times that of plasma
(C) Actively transports urea into the medullary interstitium
(D) Passively transports urea into the medullary interstitium
52. Utero-placental circulation is established in embryo by:
(A) Day 7
(B) Day 9
(C) Day 12
(D) Day 14
53. The disinfecting action of Chlorine for purification of water is due to:
(A) Free chlorine
(B) Hypochlorous acid
(C) Hypochlorite ions
(D) Chloride ions
54. Anaphylactic transfusion reactions are associated with:
(A) Leukocytes
(B) IgA
(C) Red blood cells
(D) IgE
55. Inactivation of the $\text{Na}^+\text{-K}^+$ ATPase pump will cause:
(A) Hyperpolarization of the membrane potential
(B) An increase in the intracellular volume
(C) Increased excitability of neurons
(D) Increased intracellular K^+ concentration

56. Severe maternal Zinc deficiency has been reported to be associated with:
- (A) Congenital malformations like anencephaly
 - (B) Congenital Cardiac Anomalies
 - (C) Congenital Hypothyroidism
 - (D) Congenital Bone Deformities in Children
57. 'Sterile Male Release Technique' is the technique for genetic control of which of the following vector?
- (A) Housefly
 - (B) Sandfly
 - (C) Tsetse fly
 - (D) Black fly
58. Which of the following is NOT a prodrug?
- (A) Enalapril
 - (B) Oxcarbazepine
 - (C) Chloral hydrate
 - (D) Diazepam
59. Which of the following is NOT a criterion for diagnosis of Diabetes Mellitus?
- (A) Fasting Plasma Glucose level more than 125 mg/dL
 - (B) 2 hour post load Plasma Glucose level more than 199 mg/dL
 - (C) Random Plasma Glucose level more than 140 mg/dL
 - (D) HbA1c level more than 6.5%
60. How will you dispose discarded medicines and cytotoxic drugs as per schedule I of Bio medical Waste Management after incineration?
- (A) Deep burial
 - (B) Disposal in municipal landfills
 - (C) Discharge into drains
 - (D) Disposal in secure landfills
61. Eight carpal bones are seen and tri-radiate cartilage had NOT ossified. The age group of the person is:
- (A) 0 to 4 years
 - (B) 5 to 8 years
 - (C) 9 to 15 years
 - (D) 16 to 21 years
62. The effects of TSH on thyroid gland include all EXCEPT:
- (A) Increased iodide binding
 - (B) Stimulation of endocytosis of thyroglobulin stored in colloid
 - (C) Stimulation of uptake of iodide from thyroglobulin stored in colloid
 - (D) Increased synthesis of T_3 and T_4
63. Lowest level of integration of stretch reflex is at:
- (A) Spinal cord
 - (B) Medulla
 - (C) Pons
 - (D) Midbrain
64. Which one of the following muscles acts as tensor of the vocal cord?
- (A) Cricothyroid
 - (B) Lateral cricoarytenoid
 - (C) Posterior cricoarytenoid
 - (D) Thyroarytenoid
65. Under National Programme for Prevention and Control of Cancer, Diabetes, Cardiovascular Diseases and Stroke (NPCDCS), which of the following activities are to be taken place at the sub-centre?
- (A) Establishment of Non Communicable Disease (NCD) clinics
 - (B) Placement of Nurse for home visits to take care of bed ridden cases
 - (C) Promotion of Healthy Life Style through Health Education and Counselling besides clinical Care
 - (D) Opportunistic Screening of Diabetes using glucometer optium xceed, optium test strips and auto disabled lancets

66. Resistance to Zidovudine develops due to:
- (A) Mutation at reverse transcriptase
 - (B) Increased efflux of drug from cell
 - (C) Increased metabolism of drug
 - (D) Decreased zidovudine 5 triphosphate formation
67. Which of the following drugs and equipment Kit is NOT present at a sub-centre as a part of Reproductive and Child Health Programme?
- (A) Kit A
 - (B) Kit B
 - (C) Kit P
 - (D) Midwifery Kit
68. Q fever is caused by:
- (A) Rickettsia tsutsugamushi
 - (B) Rickettsia prowazekii
 - (C) Rickettsia Quintana
 - (D) Coxiella burnetii
69. Under Integrated Disease Surveillance Project (IDSP), which of the following health/disease conditions/factors are under Sentinel Surveillance?
- (A) Polio
 - (B) Road Traffic Accidents
 - (C) Water Quality Monitoring
 - (D) Hemorrhagic Fevers
70. Dermatitis herpetiformis, on Direct Immunofluorescence is characterized by
- (A) Linear deposits of IgM in dermis
 - (B) Granular IgA deposits at the tips of dermal papillae
 - (C) Granular deposits of IgM at the dermal papillae
 - (D) Dermo-epidermal IgG deposition
71. All are true for Gap Junctions EXCEPT:
- (A) The intercellular space at gap junctions increases from 3 nm to 25 nm
 - (B) Provide low-resistance bridges for rapid propagation of electrical activity from cell to cell
 - (C) Serve as regulated cytoplasmic bridges for passage of small molecules between two neighboring cells
 - (D) Are present in cardiac and visceral smooth muscles
72. One of the following structures is NOT a component of pilosebaceous unit of thin skin:
- (A) Arrector pili muscle
 - (B) Sweat gland
 - (C) Sebaceous gland
 - (D) Hair follicle
73. An eight hour old sick newborn presents at Special Newborn Care Unit (SNCU) with distended abdomen, and weight more than 4 kgs. On examination the body temperature of the baby is 36.2 degrees centigrade. In which of the following categories would you triage the baby for management?
- (A) Emergency Signs; initiate emergency management
 - (B) Priority signs; assess and act rapidly
 - (C) Non Urgent; assess and counsel
 - (D) Non Urgent; patient can wait
74. Site of action of tetanus toxin is
- (A) Presynaptic terminal of spinal cord
 - (B) Postsynaptic terminal of spinal cord
 - (C) Neuromuscular junction
 - (D) Muscle fibres

75. Traveler's diarrhoea is caused by
(A) Enteropathogenic *E. coli*
(B) Enterohemorrhagic *E. coli*
(C) Enterotoxigenic *E. coli*
(D) Enteroinvasive *E. coli*
76. Visual acuity is greatest at fovea centralis because of all of the following EXCEPT:
(A) It is a rod-free portion of the retina
(B) Foveal cones are much fatter as compared to the long and slender body cones located in the peripheral retina
(C) Each foveal cone synapses on a single bipolar cell which in turn synapses on a single ganglion cell
(D) Blood vessels do not cover the foveal cones
77. All of the following are characteristic features of REM sleep EXCEPT:
(A) Occurrence of ponto-geniculo-occipital spikes
(B) Lowered threshold for arousal by sensory stimuli
(C) Associated with rapid, roving eye movements of the eyes
(D) Markedly reduced tone of skeletal muscles of the neck
78. Increased progesterone secretion during the post ovulatory period is associated with:
(A) Proliferation of uterine endometrium
(B) Increased secretion of FSH
(C) Enhanced development of graafian follicles
(D) Increase in basal body temperature by 0.5-1.0°C
79. Conditions simulating Rigor Mortis
(A) Algor mortis
(B) Livor Mortis
(C) Pugilistic attitude
(D) All of the above
80. Feature of Male skull is
(A) Round orbits
(B) V shaped palate
(C) Blunt mastoid
(D) Large and rough parietal eminence
81. Long chain fatty acids are transported across the inner mitochondrial membrane by:-
(A) Acyl carrier protein
(B) Carnitine
(C) Coenzyme A
(D) Citrate
82. Which of the following food items is a poor source of Calcium?
(A) Ragi
(B) Rice
(C) Green Leafy Vegetable
(D) Fish
83. Deep branch of ulnar nerve in hand supplies which one of the following muscle?
(A) First two lumbricals
(B) Opponens pollicis
(C) Adductor pollicis
(D) Superficial head of flexor pollicis brevis
84. All of the following decrease bone resorption in osteoporosis EXCEPT:
(A) Alendronate
(B) Etidronate
(C) Strontium
(D) Teriparatide
85. Macrophages containing periodic-acid-Schiff positive, diastase resistant granules are seen in which infection?
(A) *C. difficile*
(B) *Tropheryma whippelii*
(C) Enteroaggregative *E. coli*
(D) *Campylobacter jejuni*

86. Acanthosis nigricans is associated with:
- (A) Bronchogenic carcinoma
 - (B) Breast carcinoma
 - (C) Bronchial adenoma
 - (D) Gastric carcinomas
87. A useful thrombolytic agent that leads to plasmin activation is:
- (A) Vitamin K
 - (B) Heparin
 - (C) Streptokinase
 - (D) Aspirin
88. Which of the following infects hair, skin and nails?
- (A) Trichosporon
 - (B) Trichophyton
 - (C) Microsporum
 - (D) Epidermophyton
89. Which one of the following is an example of projection fibers in central nervous system?
- (A) Internal capsule
 - (B) Fornix
 - (C) Anterior commissure
 - (D) Corpus callosum
90. Which of the following is a good prognostic factor for malignant melanoma?
- (A) Absence of lymphocytes infiltrating tumor
 - (B) Clark level II
 - (C) Vertical thickness < 1 mm
 - (D) Raised LDH levels
91. All of the following drugs reduce afterload EXCEPT:
- (A) Enalapril
 - (B) Propranolol
 - (C) Hydralazine
 - (D) Sodium Nitroprusside
92. Which of the following is TRUE for a baby born to an HBV Positive mother?
- (A) The infected mother should not breastfeed the babies
 - (B) The risk of transmission of Hepatitis B is maximum during last trimester of pregnancy
 - (C) The risk of transmission is higher when the mother has HBs antigen only
 - (D) Perinatal transmission is preventable only by sero-prophylaxis combined with vaccination
93. Autoimmune gastritis is characteristic by all of the following features, EXCEPT:
- (A) Increased gastrin production
 - (B) Antibodies to parietal cells
 - (C) Neutrophilic infiltrate
 - (D) Pernicious anaemia
94. Which of the following is a non-sense codon?
- (A) GCC
 - (B) UAA
 - (C) AAG
 - (D) CAG
95. Which of the following drug is NOT used for motion sickness?
- (A) Metoclopramide
 - (B) Cyclizine
 - (C) Cinnarizine
 - (D) Scopolamine
96. Stylopharyngeus muscle is supplied by which of the following nerves?
- (A) Pharyngeal plexus
 - (B) Glossopharyngeal
 - (C) Mandibular
 - (D) Hypoglossal

97. Causes of Intersex are all EXCEPT:
- (A) Klinefelter's syndrome
 - (B) Adrenal hyperplasia
 - (C) Testicular feminization syndrome
 - (D) Cushing's syndrome
98. A 5 year old child presents with Fever, hoarseness and croupy cough. On examination of throat, the posterior pharynx and tonsil is covered with thick, greyish membrane that bleeds on touch. There is a younger sibling who is 16 months old and is fully immunized for his age. What should be done to prevent occurrence of the disease in the younger sibling?
- (A) No intervention needed since child is already vaccinated
 - (B) Another dose of the related vaccine needs to be given
 - (C) Prophylactic Penicillin/Erythromycin along with booster dose of vaccine needs to be given
 - (D) Prophylactic Penicillin/Erythromycin along with vaccine and serum needs to be given
99. *Mycobacterium scrofulaceum* belongs to which group of atypical mycobacteria?
- (A) Photochromogen
 - (B) Scotochromogen
 - (C) Rapid growers
 - (D) Non-photochromogen
100. All are true for p53, EXCEPT:
- (A) It causes cell cycle arrest and apoptosis
 - (B) It acts through p21
 - (C) It forms a complex with cyclin D
 - (D) p53 is required for G₁/S checkpoint
101. *Treponema pallidum* can be cultivated in:
- (A) Blood agar medium
 - (B) Thayer Martin medium
 - (C) Rabbit testis
 - (D) None of the above
102. A young child of 10 years is brought to a health centre with complaint of diarrhea for about a month. The attending doctor suspects him to be suffering from an immunodeficient condition. The anthropometric findings show that the child is severely malnourished and wasted. Of the following, most likely the organism responsible for this condition is:
- (A) *Shigella*
 - (B) *Giardia*
 - (C) *Yersinia*
 - (D) *Cryptosporidium*
103. Congenital – infantile fibrosarcoma is characterized by:
- (A) N-MYC amplification
 - (B) t(12;15)(p13;q25)
 - (C) t(11;22)(q24;q12)
 - (D) t(10;14)(q24;q11)
104. The term 'Demographic Burden' in demography is used to connote increase in which of the following over a period of time?
- (A) Total population
 - (B) Total dependency ratio
 - (C) Sex Ratio
 - (D) Urban population
105. Which of the following is FALSE about leprosy?
- (A) It is caused by an acid fast bacteria
 - (B) It involves facial nerve palsy
 - (C) Tuberculoid leprosy occurs in patients with poor cellular immunity
 - (D) More bacilli are found in the skin of patients with lepromatous leprosy than tuberculoid leprosy
106. Most potent vasopressor agent is:
- (A) Angiotensin II
 - (B) Aldosterone
 - (C) Vasopressin
 - (D) Cortisol

107. Which of the following structures is intracapsular and intrasynovial in relation to Knee joint?
- (A) Anterior cruciate ligament
 - (B) Posterior cruciate ligament
 - (C) Popliteus tendon
 - (D) Menisci
108. Following an automobile accident a patient complained of medial diplopia of right eye. On examination revealed that he was unable to abduct, depress and intort the right eye. Which extra ocular muscle is involved?
- (A) Superior rectus
 - (B) Superior oblique
 - (C) Inferior rectus
 - (D) Inferior oblique
109. Radical cure of Plasmodium vivax is by:
- (A) Quinine
 - (B) Tetracycline
 - (C) Primaquine
 - (D) Artesunate
110. Which of the following conditions would lead to greatest reduction in oxygen delivery to the tissues?
- (A) Sudden ascent to high altitude
 - (B) Cyanide poisoning
 - (C) Carbon monoxide poisoning
 - (D) Moderate exercise
111. MHC Class II molecules are present on the surfaces of:
- (A) All nucleated cells
 - (B) Macrophages, dendritic cells and B lymphocytes
 - (C) All bone marrow derived cells
 - (D) Dendritic cells, eosinophils and basophils
112. All of the following are true for Paroxysmal Nocturnal Hemoglobinuria, EXCEPT:
- (A) Inherited stem cell defect
 - (B) May follow Aplastic Anemia
 - (C) Is associated with phenotypic mosaicism
 - (D) Increased sensitivity of RBCs to complement mediated lysis
113. Glucose entry into the cells is NOT Insulin dependent in:
- (A) Skeletal muscles
 - (B) Adipocytes
 - (C) Cardiac muscles
 - (D) Lens of the eyes
114. Postmortem hypostasis is dependent upon
- (A) Posture of body before death
 - (B) Posture of body after death
 - (C) Temperature
 - (D) Blood pressure
115. Which of the following is NOT an adverse effect of Clozapine?
- (A) Agranulocytosis
 - (B) Seizures
 - (C) Sialosis
 - (D) Weight loss
116. Criteria to certify Brain Death includes all EXCEPT:
- (A) Absent Corneal Reflex
 - (B) Absent Pulse
 - (C) Flat EEG
 - (D) Lack of spontaneous respiration

117. Axis of supination and pronation of the forearm passes through:
- (A) Centre of coronoid process of ulna and styloid process of radius
 - (B) Centre of head of radius and styloid process of ulna
 - (C) Centre of head of radius and ulnar attachment of articular disc
 - (D) Centre of coronoid process of ulna and ulnar attachment of articular disc
118. A man falls asleep with one arm under his head for long period. On awakening, he finds this arm to be paralyzed with relatively intact pain sensation. The reason for this pattern of loss is:
- (A) Motor nerves are affected more than the sensory nerves by sleep
 - (B) C fibers are more susceptible to hypoxia than A fibers
 - (C) A fibers are more susceptible to pressure than C fibers
 - (D) B fibers are more sensitive to pressure than A fibers
119. Thiazide diuretics DO NOT cause:
- (A) Hypercalcemia
 - (B) Hypomagnesemia
 - (C) Hyperkalemia
 - (D) Hyperuricemia
120. Which of the following drugs is NOT used against pseudomonas?
- (A) Piperacillin
 - (B) Cabenicillin
 - (C) Ticarcillin
 - (D) Oxacillin
121. Neutropenia is associated with:
- (A) Nafcillin
 - (B) Methicillin
 - (C) Carbencillin
 - (D) Ampicillin
122. On visit to a sub-centre area (Population base of 5000, Birth Rate: 25/1000) to supervise the records of the ANM, you find that there are 38 antenatal cases registered in her monthly work plan for TT injections and iron folic acid. The number of beneficiaries recorded seem to be:
- (A) Less than Expected
 - (B) More than Expected
 - (C) Near Expected
 - (D) Cannot comment since this figure comes from head count of antenatal cases in the area
123. The venom of which snake is musculotoxic?
- (A) Cobra
 - (B) Saw scaled viper
 - (C) Banded krait
 - (D) Sea snake
124. Cotton candy exudate is seen in lungs of patients infected with
- (A) Haemophilus influenzae
 - (B) Candida albicans
 - (C) Pneumocystis jiroveci
 - (D) Cytomegalovirus
125. The disease associated with defective protein conformation is:
- (A) Sickle cell anemia
 - (B) Cystic fibrosis
 - (C) Prion disease
 - (D) Fragile X syndrome

126. Methotrexate is a competitive inhibitor of enzyme:
(A) HMG Coenzyme A reductase
(B) Dihydrofolate reductase
(C) Ribonucleotide reductase
(D) Thymidylate synthase
127. Which of the following Progesterone is used in emergency contraception?
(A) Levonorgestrel
(B) Micronised Progesterone
(C) Norgestrel
(D) Depot Medroxyprogesterone acetate
128. Muscles of the Palate are supplied by the:
(A) Vago-accessory complex
(B) Maxillary nerve
(C) Mandibular nerve
(D) Glossopharyngeal nerve
129. Which of the following NOS is activated by TNF and IFN- γ ?
(A) NOS
(B) iNOS
(C) eNOS
(D) nNOS
130. One of the following structures does NOT pass through carpal tunnel:
(A) Flexor pollicis longus tendon
(B) Flexor digitorum superficialis tendons
(C) Flexor carpi ulnaris tendon
(D) Flexor digitorum profundus tendons
131. Least common type of fingerprint:
(A) Loops
(B) Whorls
(C) Arches
(D) Composite form
132. The drug that DOES NOT result in Theophylline toxicity:
(A) Ciprofloxacin
(B) Amoxicillin
(C) Erythromycin
(D) Cimetidine
133. Calabar swelling is produced by:
(A) *Onchocerca volvulus*
(B) *Brugia malayi*
(C) *Loa loa*
(D) *Wuchereria bancrofti*
134. LCAT is involved in the transport of cholesterol from:
(A) Liver to peripheral tissues
(B) Peripheral tissues to liver
(C) Intestine to peripheral tissues
(D) Intestine to liver
135. True about Esmolol is:
(A) It is a cardioselective beta blocker
(B) It causes tachycardia
(C) It has negative inotropic activity
(D) It increases airway resistance
136. The causative agent of Buruli Ulcer is:
(A) *Mycobacterium chelonae*
(B) *Mycobacterium ulcerans*
(C) *Mycobacterium fortuitum*
(D) None of the above
137. Degeneracy of genetic code implies:
(A) Codons are triplets
(B) Multiple codons can code for a single amino acid
(C) A single codon can code for multiple amino acids
(D) Codons are not universal
138. CDKN2A mutation is associated with:
(A) 70% of glioblastomas
(B) 50% of oligodendrogliomas
(C) 75% of medulloblastomas
(D) 70% of ependymomas

139. The antiepileptic drug which DOES NOT produce enzyme induction is:
- (A) Phenobarbitone
 - (B) Sodium Valproate
 - (C) Phenytoin
 - (D) Carbamazepine
140. The biomolecule that does NOT require Biotin for carboxylation by enzyme in Human body is:
- (A) Acetyl CoA
 - (B) Propionyl CoA
 - (C) Pyruvate
 - (D) Glutamate
141. Heparin induced thrombocytopenia is characterized by:
- (A) Binding of antibodies to epitopes on plasma proteins
 - (B) Binding of antibodies to epitopes on prothrombin
 - (C) Binding of antibodies complexes on endothelial cells
 - (D) Binding of antibodies to heparin like molecules
142. Duties of the State Medical Council include
- (A) Maintaining Medical Register
 - (B) Appeal against Disciplinary Control
 - (C) Medical Education
 - (D) All of the above
143. Katayama fever is caused by
- (A) Fasciola hepatica
 - (B) Clonorchis sinensis
 - (C) Schistosoma haematobium
 - (D) Strongyloides stercoralis
144. All of the following are metaphyseal tumors of bone, EXCEPT:
- (A) Osteoid osteoma
 - (B) Osteogenic osteosarcoma
 - (C) Osteochondroma
 - (D) Osteoclastoma
145. The cell type, from which Hodgkin's lymphoma arises is
- (A) Germinal centre B cells
 - (B) Mantle zone T cells
 - (C) Paracortical T cells
 - (D) Sinus histiocytes
146. Left ventricular ejection fraction is minimal in
- (A) Dilated cardiomyopathy
 - (B) Restrictive cardiomyopathy
 - (C) Hypertrophic cardiomyopathy
 - (D) All of the above
147. An infant comes to a health worker at 9 months of age for vaccination and has NOT been given any vaccine till date. The mother permits administration of only one injection in this visit. As per recommendations of National Technical Advisory Group on Immunization, which vaccine should be given to this child?
- (A) DPT
 - (B) Pentavalent (DPT, HBV and Hib) with OPV
 - (C) Measles with Vit A
 - (D) Measles with OPV, Vitamin A
148. Fragmentation of internal elastic lamina is a feature of which vasculitis?
- (A) Polyarteritis nodosa
 - (B) Wegener's Granulomatosis
 - (C) Takayasu's arteritis
 - (D) Temporal (giant cell) arteritis
149. Which of the following is the content of anterior interventricular groove?
- (A) Coronary sinus
 - (B) Great cardiac vein
 - (C) Small cardiac vein
 - (D) Middle cardiac vein
150. Which of the following lesions is rare in liver?
- (A) Portal vein obstruction
 - (B) Microsteatosis
 - (C) Liver infarct
 - (D) Portal tract fibrosis

Space for Rough Work:

